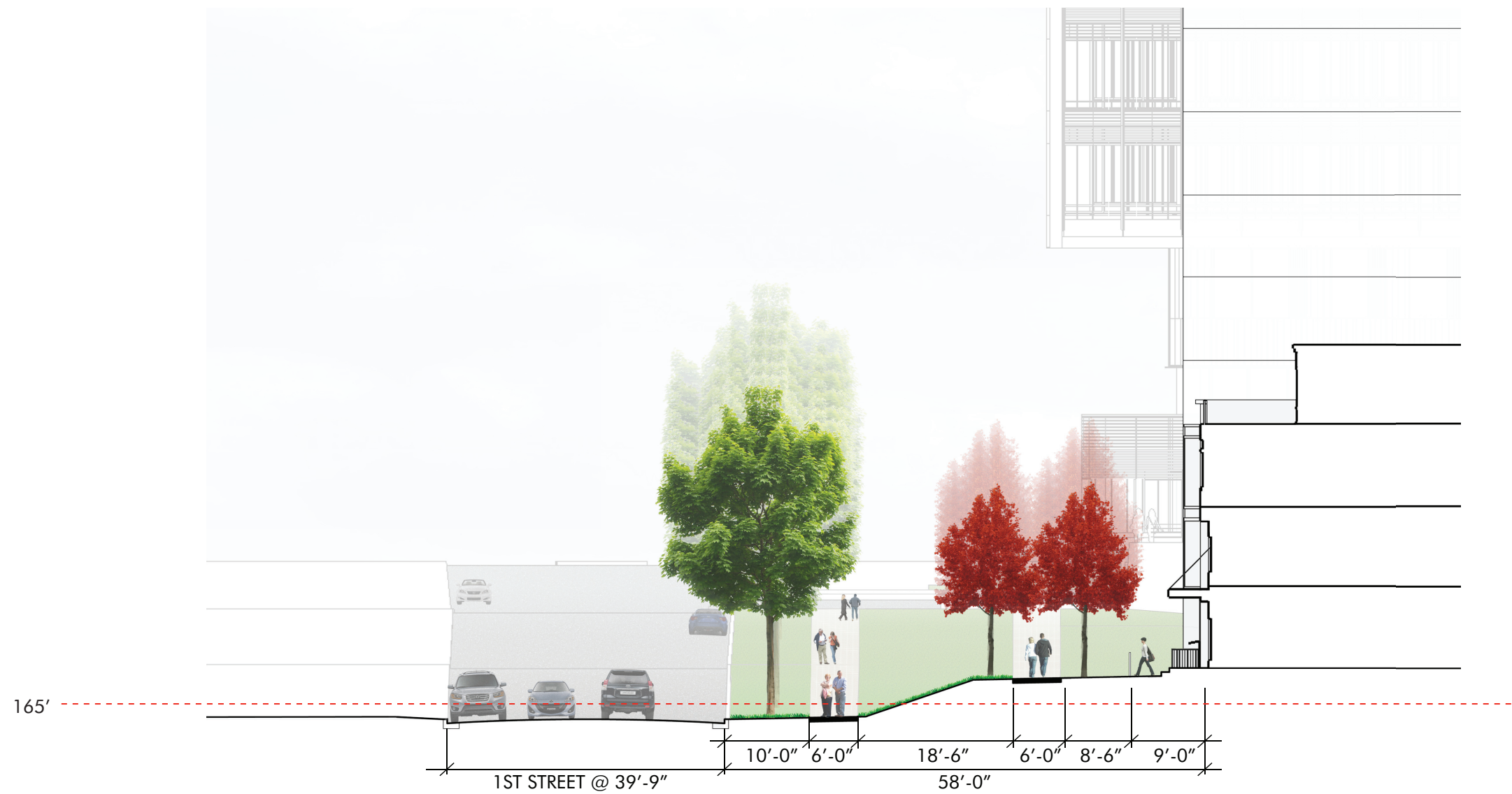


1 FIRST STREET: ROW HOUSE

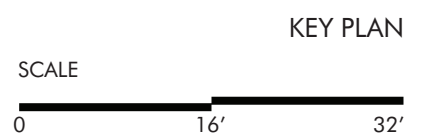
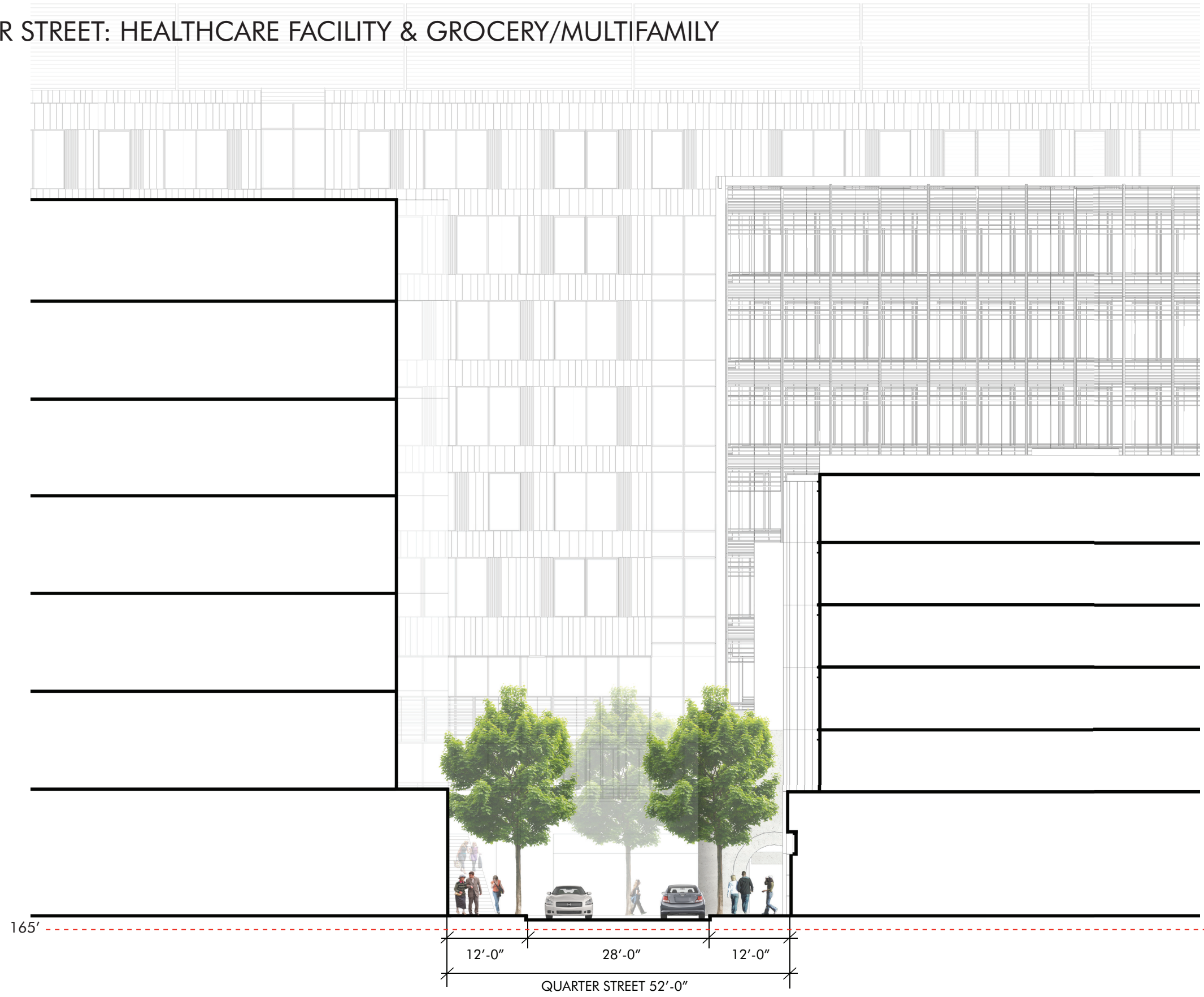


KEY PLAN

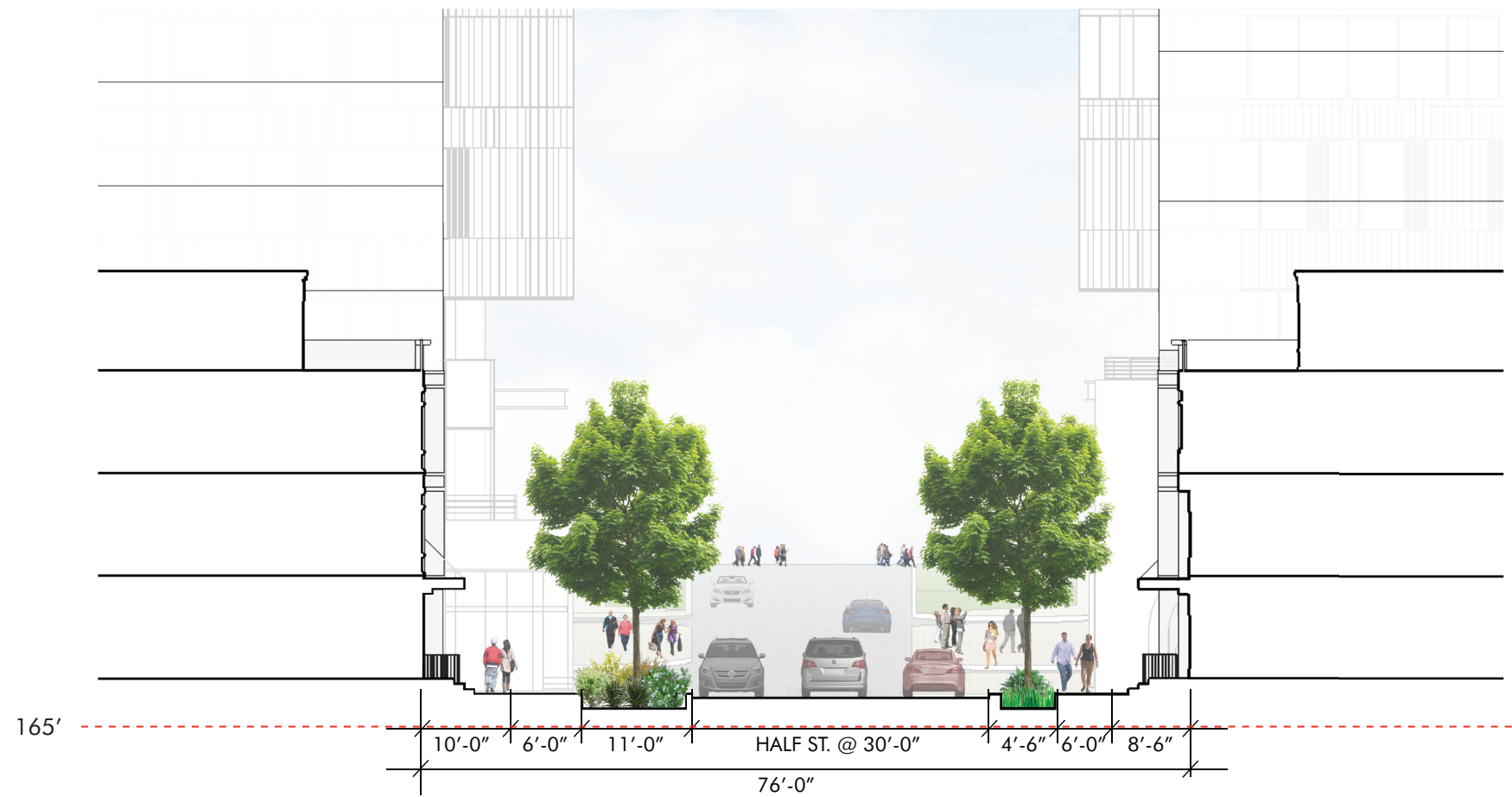


ZONING COMMISSION  
 District of Columbia  
 CASE NO. 13-14  
 EXHIBIT NO. 6A15

2 QUARTER STREET: HEALTHCARE FACILITY & GROCERY/MULTIFAMILY



3 HALF STREET: ROW HOUSES



KEY PLAN

